



La Rive

Designed to complement a sophisticated lifestyle for only a very few, the interiors of the ultra-Luxury

La Rive make a clear modern statement - unique to this area. Located on one of the most beautiful sections of our Intracoastal waterway, La Rive is anything but cliché. Fort Lauderdale has never seen anything like it. It is very fresh, very sophisticated. By virtue of its unique design, it has attracted a very sophisticated group of residents.

With the floor to ceiling glass surrounding your every step, you will feel as if your space goes on forever. The floorplans are impressive, with water views as far as you can imagine from almost every vantage point in the building.

Setting the tone for future projects along the waterfront, La Rive's sleekly elegant 10-story tower of curving glass was proud to announce the completion of their 37 exclusive units in summer of 2004.

Inside each unit custom-designed, fully-equipped kitchens include granite counters and a full backsplash, selected Italian cabinetry in wood, lacquer and stainless steel finishes, Kohler faucets and fixtures, and the KitchenAid Architect Series of appliances.

Building Amenities*:

- Contemporary design domed lobby with custom, imported furnishings; attended by concierge/ doorman
- Private gym and spa adjacent to pool deck; personal steam and sauna rooms
- Tropical garden waterfall and swimming pool overlooking Intracoastal; private sundeck with fountains
- Secured indoor parking
- Complete fire sprinkler system with automatic fire control and smoke evacuation network.
- Elevators open to private or semi-private residence lobby
- Advanced wiring for broadband high-speed computer and cable access

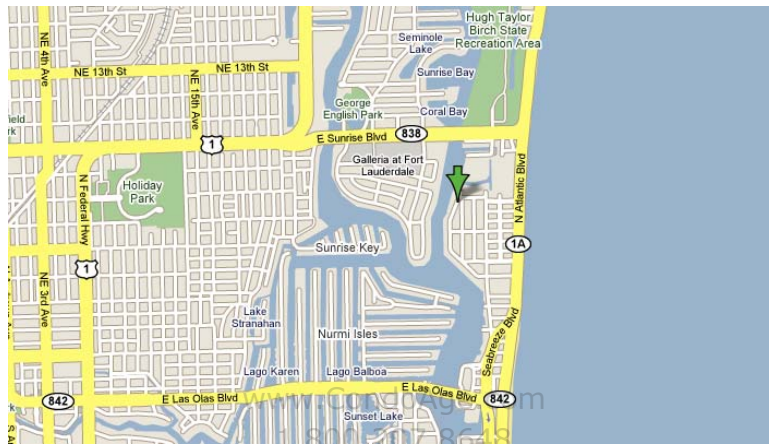
Location Amenities*:

- Directly on the Intracoastal Waterway; guest docking and water taxi pick up at your door
- Four blocks stroll to ocean beach or state park
- Five minutes from Las Olas restaurants and boutiques, Performing Arts Center or Galleria Mall
- Short drive to I-95 or International Airport

Residence Features*:

- Ceiling height of 9 feet with Penthouse to 10 feet
- Glass terrace railings enhance views
- Private elevator foyer and entrance
- Individually controlled security and greeting system
- Custom-designed, fully-equipped kitchens
 - Granite counters and full backsplash
 - Selected Italian cabinetry in wood, lacquer and stainless steel finishes
 - Kohler faucets and fixtures
 - KitchenAid Architect Series appliances including side-by-side refrigerator/freezer, glass cooktop, double convection oven, microwave, dishwasher, under counter wine cellar
- Fully-appointed baths
 - Italian cabinetry
 - Marble floors, surrounds and counters
 - Kohler and Toto fixtures
 - Frameless glass showers and whirlpool tubs in master bathroom

* Features and amenities may vary depending on model



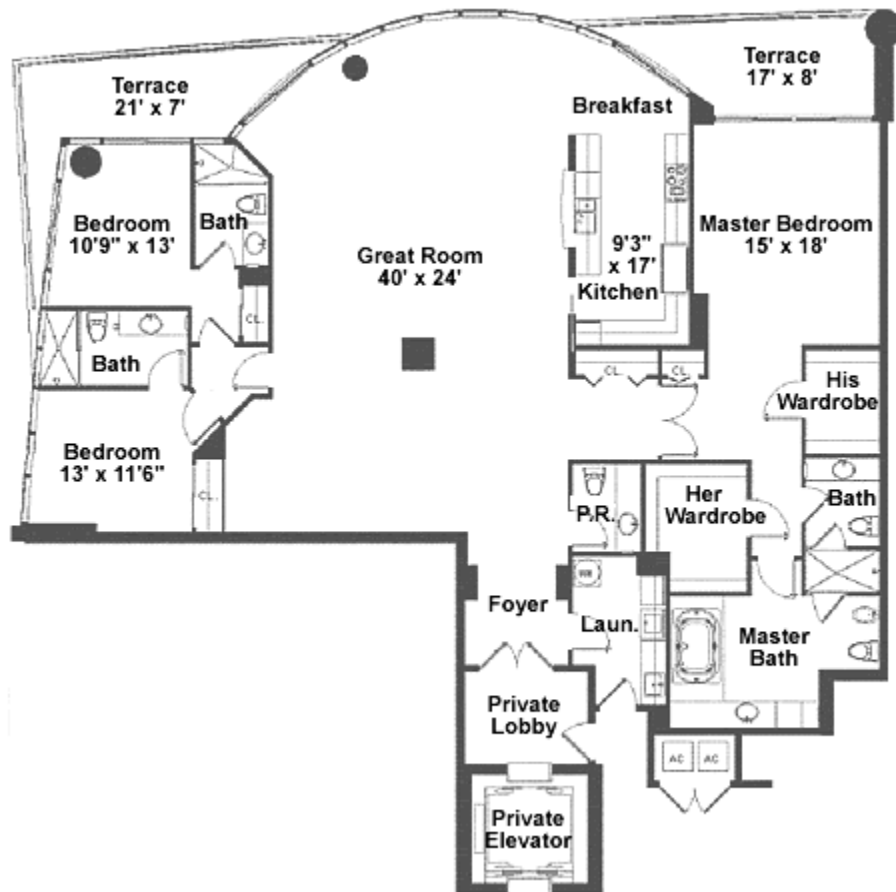
The La Rive Floor Plan "Residence C" [Line 01 & 02]

3 Bedroom
4 - 1/2 Bath

AIR CONDITIONED SPACE
3,083 Square Feet

TERRACES
326 Square Feet

TOTAL LIVING SPACE
3,409 Square Feet



www.CondoAge.com

1.800.207.8648

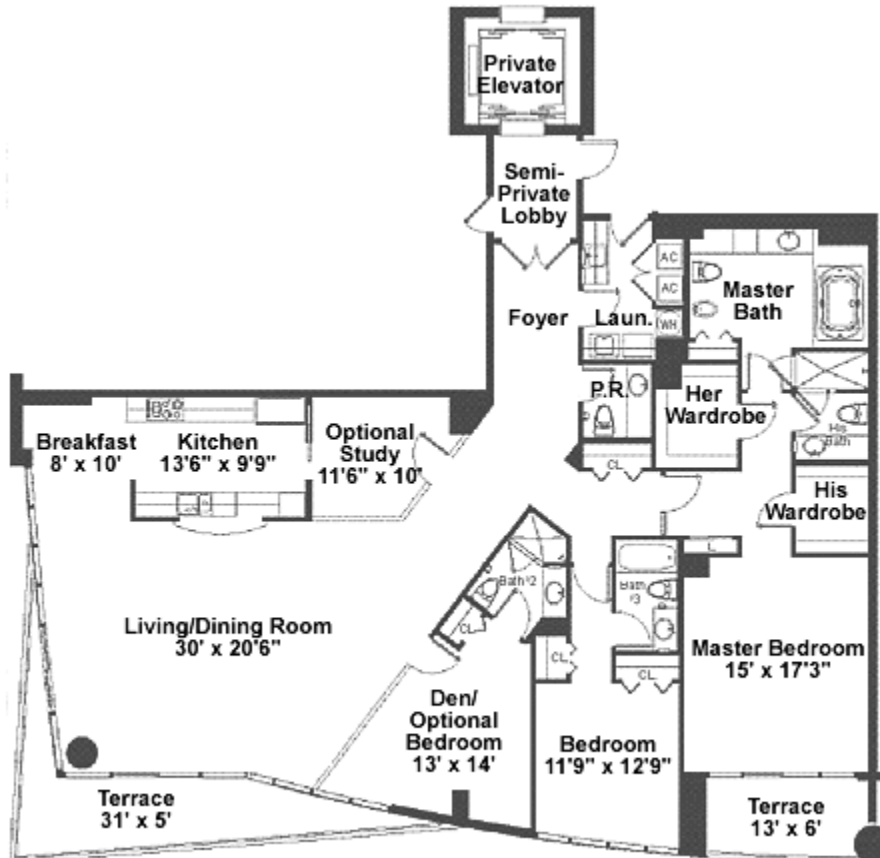
The La Rive
Floor Plan "Residence D"
[Line 03 & 04]

3 Bedroom/Den
4 - 1/2 Bath

AIR CONDITIONED SPACE
2,681 Square Feet

TERRACES
288 Square Feet

TOTAL LIVING SPACE
2,969 Square Feet



www.CondoAge.com

1.800.207.8648

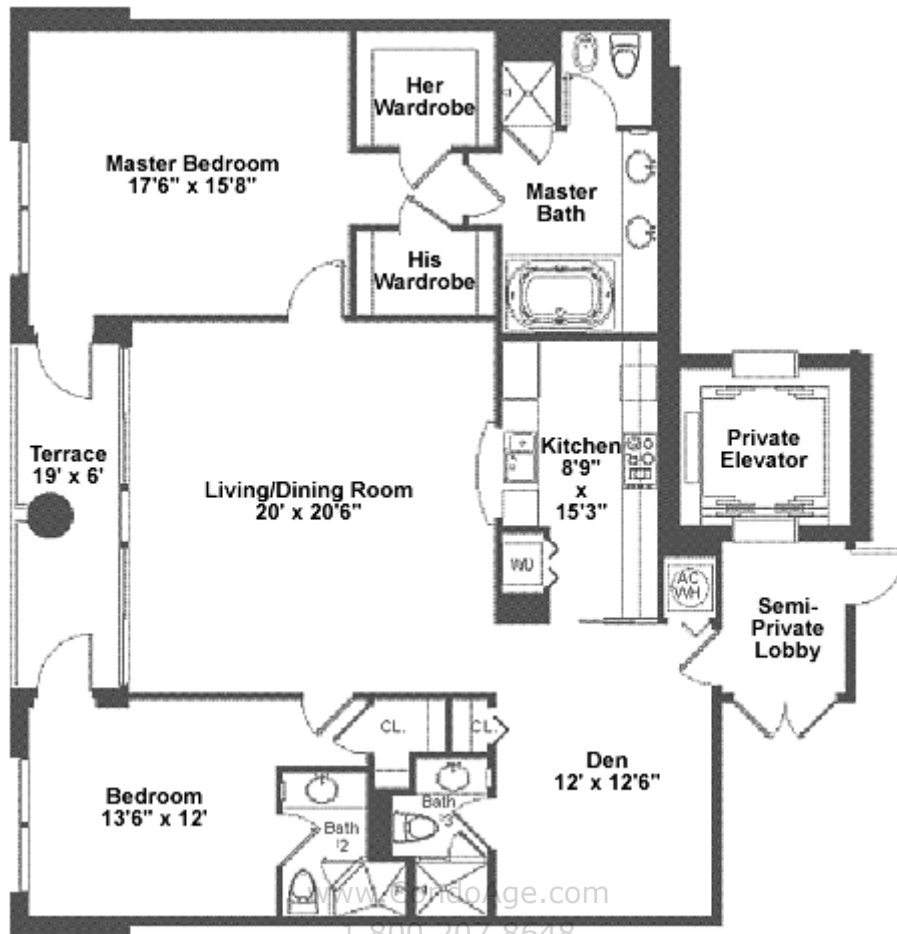
The La Rive
Floor Plan "Residence E"
[Line 05 & 06]

2 Bedroom/Den
3 Bath

AIR CONDITIONED SPACE
1,733 Square Feet

TERRACES
102 Square Feet

TOTAL LIVING SPACE
1,835 Square Feet



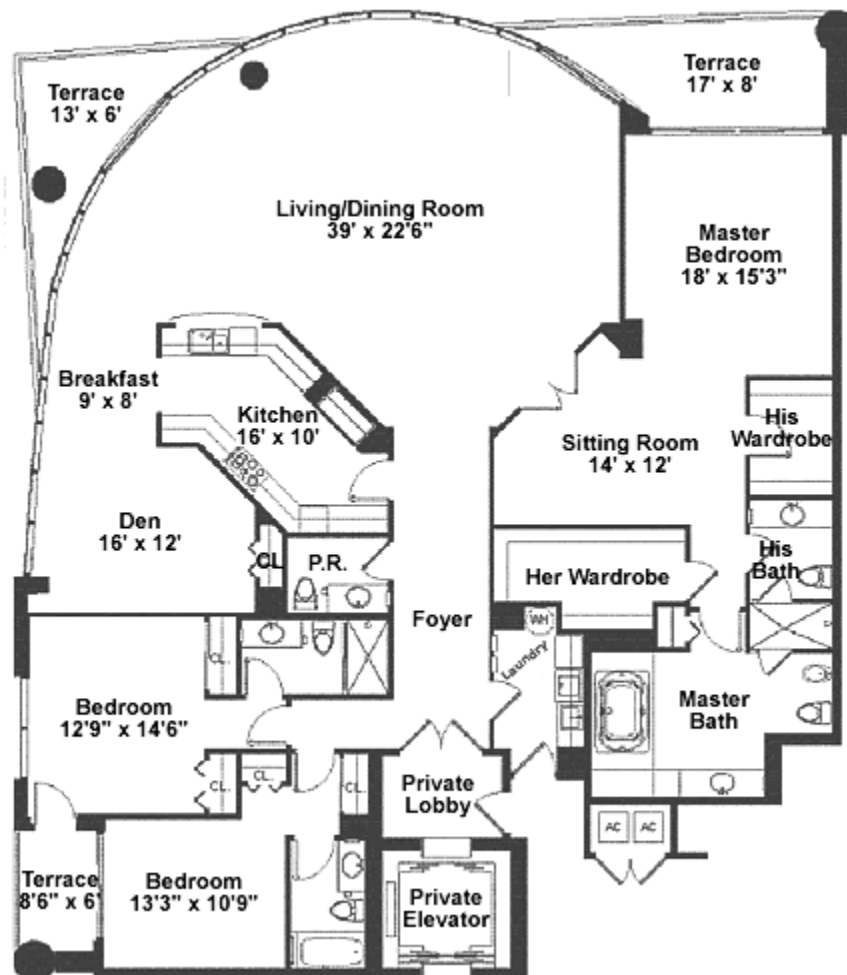
The La Rive Floor Plan "Residence A" [PH01 & PH02]

3 Bedroom/Den
4 - 1/2 Bath

AIR CONDITIONED SPACE
3,417 Square Feet

TERRACES
272 Square Feet

TOTAL LIVING SPACE
3,689 Square Feet



www.CondoAge.com

1.800.207.8648

The La Rive Floor Plan "Residence B"

3 Bedroom/Great Room
4 - 1/2 Bath
[PH4]

AIR CONDITIONED SPACE
2,992 Square Feet

TERRACES
286 Square Feet

TOTAL LIVING SPACE
3,278 Square Feet

