

OASIS  
ON THE BAY



[www.CondoAge.com](http://www.CondoAge.com)  
1.800.207.8648

7951 NE Bayshore Ct Miami, FL 33138



## OVERVIEW

Oasis is comprised of two 20-story towers lying on a 3.4 acre site that looks across the Bay towards the island municipality of North Bay Village. The two towers consist of 465 total units which will range in size from 685 to 1800 sq. ft.

Residents of Oasis on the Bay will be able to take advantage of a generously sized health club and spa, restaurant, poolside snack bar and mini-market, marina with up to 20 boat slips, infinity-edge pool with cabanas, security attended gated entry, 24-hour valet and concierge, storage spaces, and a theater room to watch the latest and hottest DVDs with your friends and family.

The architectural firm privileged to design the project is award winning architect Cohen, Freedman and Encinosa. We're offering units with modern, luxurious and functional spaces overlooking the waters of Biscayne Bay and facing North Bay Village.

[www.CondoAge.com](http://www.CondoAge.com)

1.800.207.8648

To continue learning all about what the building has to offer and to view our building renderings and other related documents, please continue exploring the site. Please keep in mind that renderings and information contained in this site are subject to change.

## **Building Features and Amenities**

- Expansive one, one + den, two, and three bedroom residences
- Advanced Technology "smart building" pre-wired for Wi-Fi High speed internet, data/voice cable TV access
- Impressive 24-hour attended lobby with original artwork
- Valet parking
- Beautifully landscaped pool and sun terrace
- Fully equipped fitness center
- Elegant clubhouse overlooking Biscayne Bay
- Outdoor treatment cabanas
- 4,200 square foot restaurant on Biscayne Bay
- State of the art movie theater
- Onsite food emporium
- 24-hour controlled access
- Convenient mail and receiving desk; concierge
- 3 elevators per tower
- Design by award winning architect: Cohen Freedman Encinosa
- Secure elevators to be accessed by resident key fobs or access cards
- Incredible city and bay views

## **Residence Features**

- Wireless smart screen touchpad tablet with access to all of the building's amenities and services
- Private balconies with sliding glass doors
- Energy efficient, tinted, impact resistant sliding glass doors and windows
- Individually controlled Energy Efficient Central Air Conditioning and Heating System
- Spacious living room with adjacent terraces (see your individual floor plan)
- Spacious closets (see your individual floor plan)
- Designer track lighting in dining rooms and kitchens
- Designer carpet in bedrooms
- Finished ceiling heights ranging from 9' 0" to nearly 12' in certain residences

## **Gourmet Kitchens**

- Granite counter tops with convenient breakfast bar
- Stylish porcelain tile
- Italian cabinetry featuring exceptional detail
- Latest model, energy efficient, stainless steel appliance package featuring:
  - Side-by-side, frost-free refrigerator/freezer with ice dispenser
  - Range/Oven
  - Multi-cycle dishwasher
  - Built-in microwave
- Top of the line full size stackable washer/dryer (see your individual floor plan)
- Double kitchen sink with waste disposal

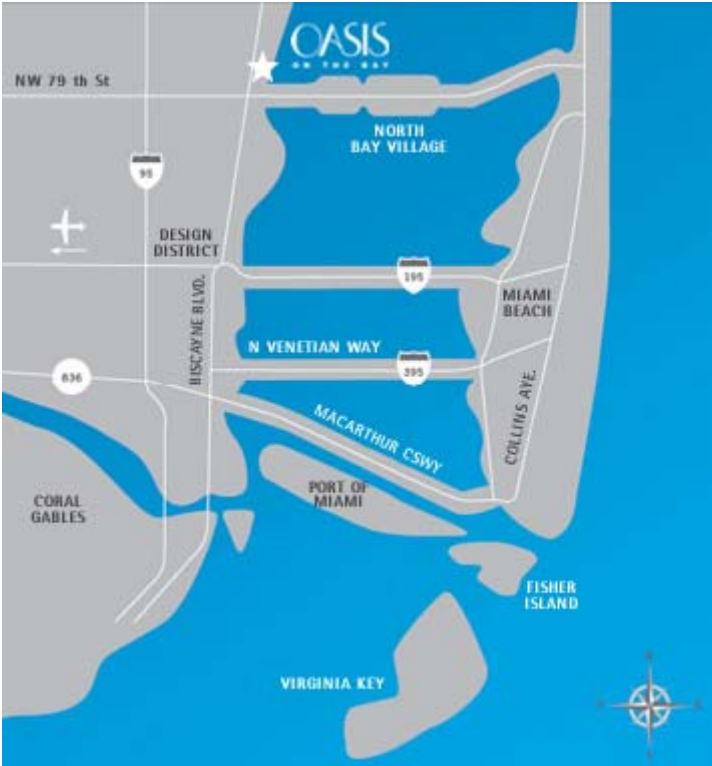
## **Bathroom Features**

- Stylish fixtures
- Porcelain tile
- Polished marble counter tops
- Illuminated vanity mirrors

[www.CondoAge.com](http://www.CondoAge.com)

1.800.207.8648

# LOCATION



# SAMPLE FLOOR PLANS

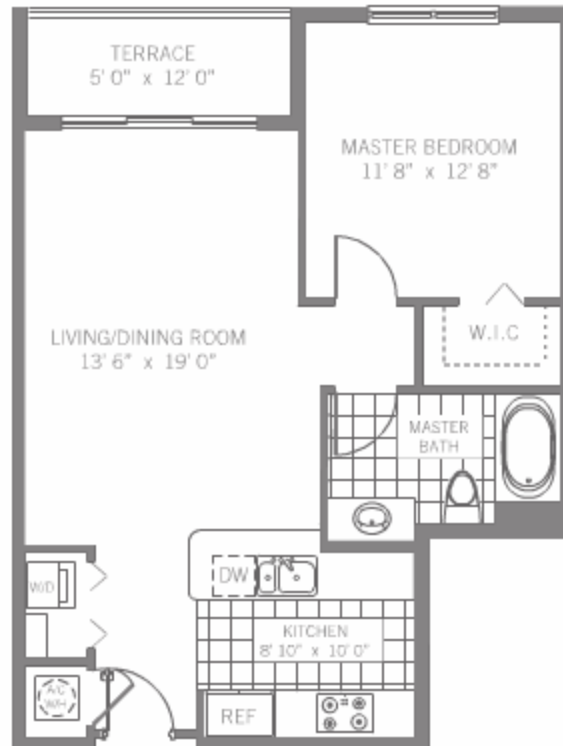


Equal Housing Opportunity. All elements, measurements, graphic materials, plans, specifications, names, and terms and statements provided in this brochure are accurate and intended only to be used as a guide and not necessarily reflect the actual plans and specifications for the development. Prospective purchasers should consult the sales representative for all of the above information and without other restrictions. Plans subject to change without notice. Not an offer. Plans prohibited by state law.

## UNIT A2

1 Bedroom / 1 Bathroom

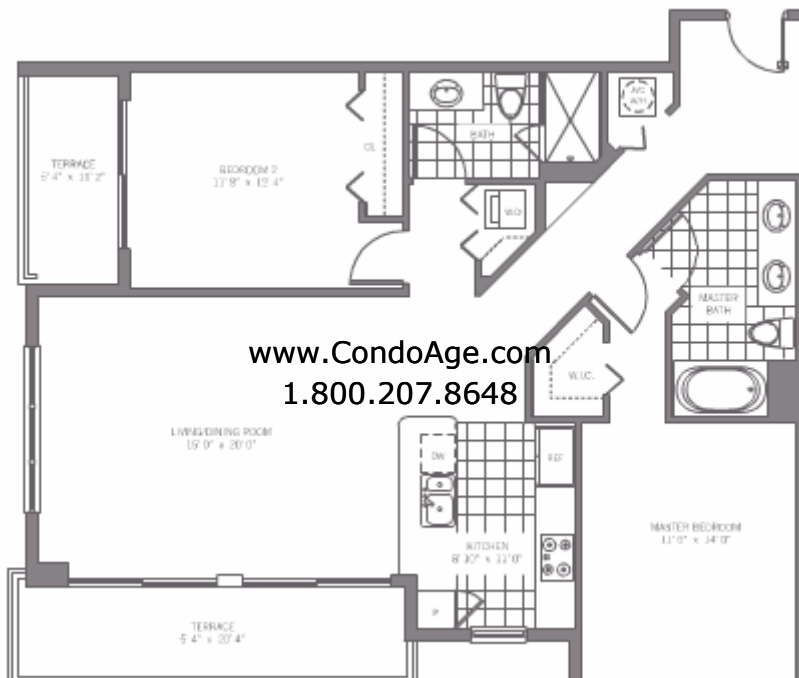
Total 781 S.F.



## UNIT B2

2 Bedrooms / 2 Bathrooms

Total 1398 S.F.



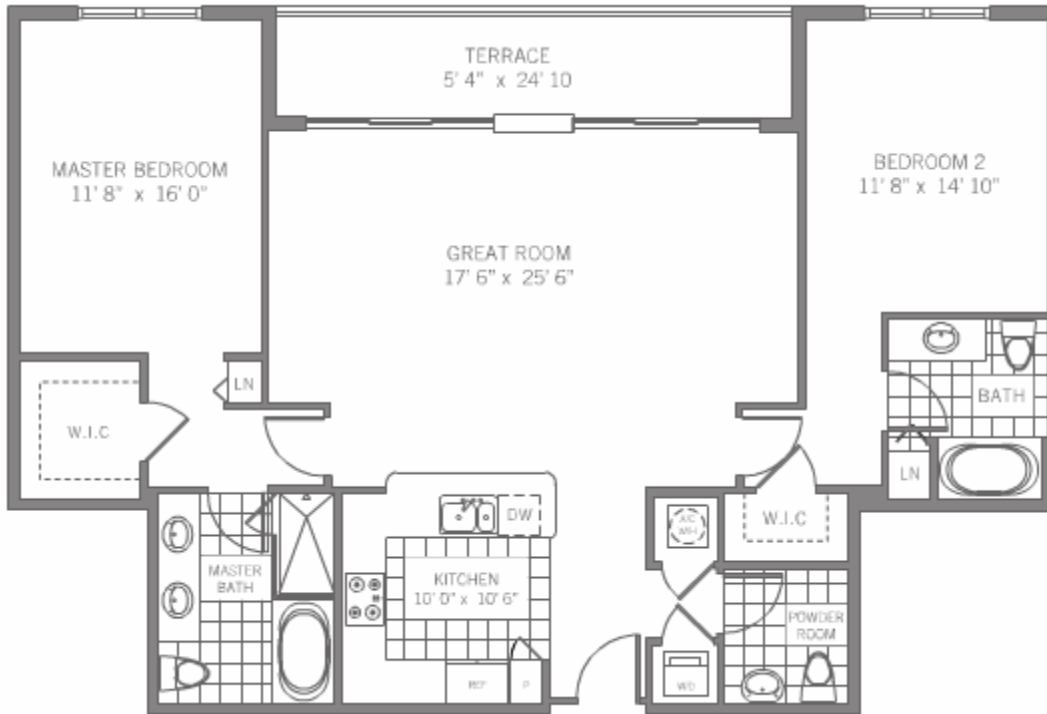
[www.CondoAge.com](http://www.CondoAge.com)  
1.800.207.8648

# UNIT PH1

2 Bedrooms / 2.5 Bathrooms

Total

1536 S.F.



[www.CondoAge.com](http://www.CondoAge.com)  
1.800.207.8648