

Promenade

Luxury Condominiums in
the New Boynton Beach



THE SETTING

- Breathtaking panoramic city and water views of the Atlantic Ocean, Intracoastal Waterway and adjacent Promenade Park
- Lush tropical landscaping and waterscape features throughout
- Nestled beside Promenade Park and a serene nature preserve, with walking and jogging trails, providing the perfect backdrop for your workout
- RiverWalk Promenade leads to picturesque vistas along the Intracoastal Waterway
- 20,000 square feet of retail space, featuring upscale boutiques, restaurants and cafés
- Minutes from the beach

BUILDING FEATURES

- Two, 14-story towers designed by Cohen, Freedman, Encinosa & Associates
 - Dramatic, 24-hour attended, two-story lobby and common areas designed by the award-winning firm, Interiors by Steven G.
 - Concierge services available
 - Assigned parking in Promenade's private garage and optional 24-hour valet parking at the lobby entrance
 - Private beach shuttle
 - Available on-site dry cleaning pick-up and delivery
 - Tropically landscaped pool deck with Olympic-length lap pool, a separate zero-entry beach pool, whirlpool spa, and putting green
- 1.800.207.8648

- Elegant club room with bar and catering kitchen for private gatherings
- State-of-the-art fitness center with the latest strength and cardiovascular training equipment and aerobic / yoga studio overlooking the pool deck and Intracoastal Waterway
- Men's and women's locker rooms with eucalyptus steam shower, sauna, and treatment room
- Business center with high-speed data and voice capability
- Wi-Fi wireless Internet access in clubhouse and pool area
- The Groom Room, with exclusive, on-site pet grooming and care facilities
- State-of-the-art building access and security system
- Technologically advanced fire safety system

SPECIAL HOTEL SERVICES

- All the amenities and services of a Five-Star lifestyle
- Housekeeping services available
- Airport transportation available
- Refrigerator stocking service available

RESIDENCE FEATURES

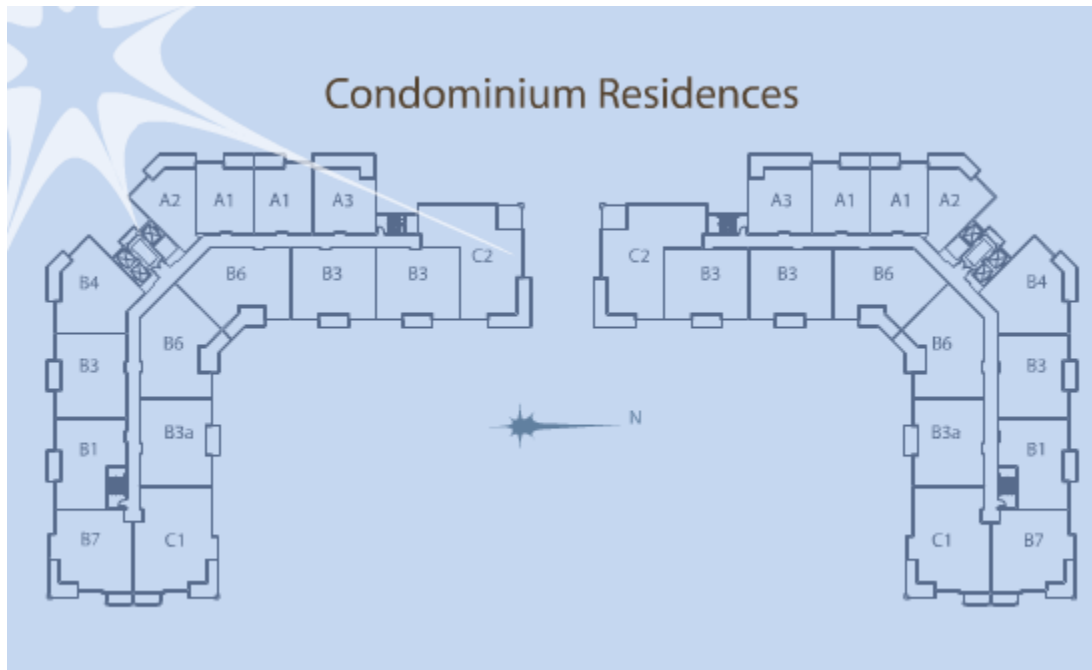
- Stain-resistant, wall-to-wall carpeting with high-density padding in bedrooms and living areas
- Entertainment-sized living rooms with private terraces
- 9' ceiling heights in living spaces
- 10' ceiling heights in top-floor penthouses
- Recessed high-hat lighting per plan
- Pre-wired for ceiling fans in all bedrooms and living room
- Pre-wired for high-speed Internet, data/voice and cable TV access
- Tinted, energy-efficient and impact-resistant sliding glass doors and windows
- Large-capacity, multiple-cycle washer and dryer
- Energy-efficient air conditioning and heating system

GOURMET KITCHENS

- Imported granite countertops with backsplash
- Custom European-style cabinetry
- Designer tile flooring
- Whirlpool Gold energy-efficient appliances in stainless steel:
 - Side-by-side refrigerator/freezer
 - Built-in microwave oven
 - Multi-cycle, pot-scrubbing dishwasher
 - Slide-in, self-cleaning oven with ceramic glass top stove
 - Double-basin stainless steel sink with designer single-lever faucet and pull-out spray

LAVISH MASTER BATHS

- Custom, European-style cabinetry with marble countertops and backsplash, and ceramic sink
- Full-height vanity mirrors
- Marble flooring
- Glass-enclosed marble shower with designer fixtures
- Separate soaking tub



PRODUCT MIX

1 Bedrooms	820 - 840 sq ft
2 Bedrooms	1186 - 1386 sq ft
3 bedrooms	1625 - 1650 sq ft

SAMPLE FLOOR PLANS

www.CondoAge.com

1.800.207.8648

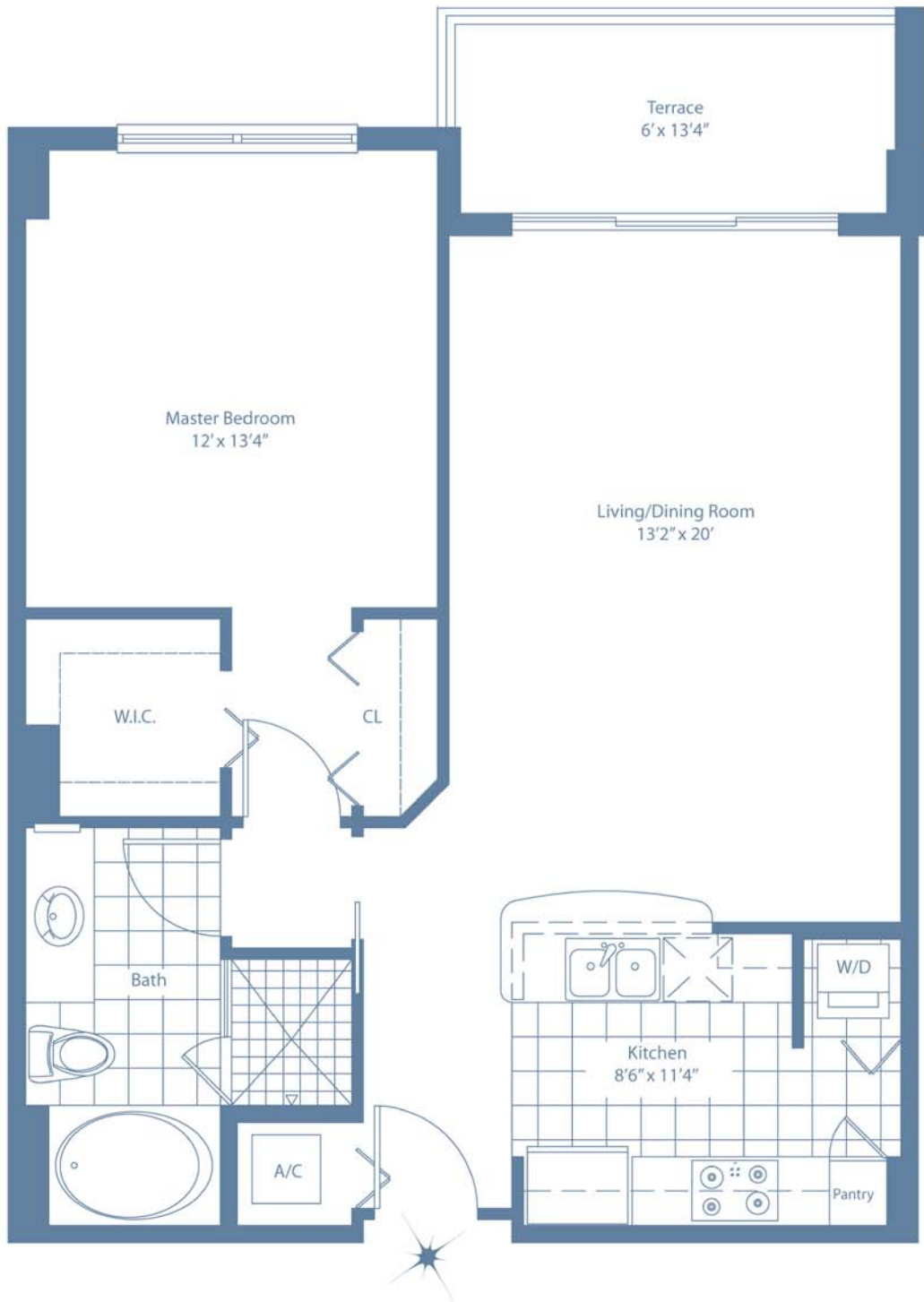
UNIT A1

1 BED/1 BA

RESIDENCE 805 S.F.

TERRACE 80 S.F.

TOTAL 885 S.F.



UNIT B3

2 BED/2 BA

RESIDENCE 1186 S.F.

TERRACE 78 S.F.

TOTAL 1263 S.F.



UNIT C1

3 BED/2.5 BA

RESIDENCE 1625 S.F.

TERRACE 175 S.F.

TOTAL 1800 S.F.

