

A NEW WATERFRONT VILLAGE ON THE INTRACOASTAL

There is an unmistakably intoxicating quality to Boynton Beach that few can resist. It has been that way for as long as anyone has been keeping records.

Nathan S. Boynton stumbled upon this serene stretch of coastline over a century ago, and knew he had found something special. His Boynton Beach Hotel was opened a year before Flagler's railroad reached the town, giving him ample time to prepare. When the trains came through, the tourists began to arrive. Boynton Beach has been a well-kept secret and beloved destination ever since.

Though Boynton's hotel is long since gone, his Beach is as beautiful and serene as ever. Marina Village is designed around the finest qualities of life in Boynton Beach. To live here is to appreciate the natural beauty and rhythm of life on the water.

MARINA VILLAGE
at BOYNTON BEACH



On the Boynton Beach Waterfront, a new downtown is taking shape

Two towers of luxury residences anchor this new community of shops, parks, and recreational features, all surrounding a private marina. The new community will combine a Key West style casual lifestyle with the sophisticated charm and grace of Palm Beach. Imagine the contrast of tropical shirts and flip flops along side elegant dining and shopping.

Community Features:

- Lush landscaping throughout
- Waterfront Promenade
- Boat slips in deep-water marina with easy access to ocean
- Waterfront restaurant
- Retail and office space
- Beautifully landscaped courtyard
- Rod and tackle storage

Building Features and Amenities:

- Concierge Service
- Valet Parking
- State of the art fitness center
- Covered parking
- Full service business center
- Clubhouse with media lounge and billiards
- Heated pool and spa
- 24-hour controlled access system

Residence Features:

- Entertainment sized living area with private terrace
- 8'8" ceiling
- Wall-to-wall carpeting in living room, dining room and bedrooms
- Italian tiled foyer, kitchen, and baths
- Halogen track lighting in dining room
- Impact-resistant windows and sliding doors
- Energy-efficient AC/heating system
- Pre-wired for cable televisions and telephones
- Pre-wired for high-speed internet access

In the Kitchen:

- Elegant granite countertops
- Italian cabinetry
- Appliances in stainless steel and cabinet-coordinated paneling
- Double-basin stainless steel under-mounted sink with single lever faucet and sprayer
- Spacious pantry
- Designer floor tile

In the Baths:

- Luxurious marble vanity tops
- Italian cabinetry
- Wall-to-wall vanity mirror
- Designer floor and wall tile
- 42" tubs in Master Bath
- Oversized tubs
- Designer fixtures



www.CondoAge.com

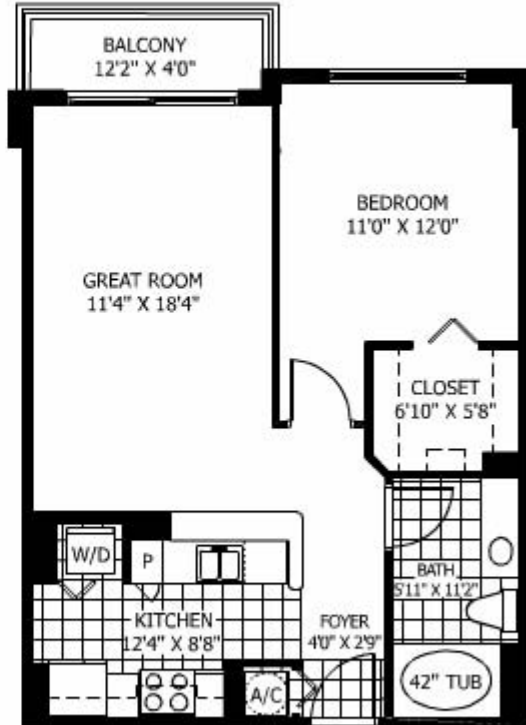
1.800.207.8648



Sample Floor Plans

UNIT A-1
1 BR/1 BATH
A/C AREA: 691 S.F. 64.2 S.M.
BALCONY: 48 S.F. 4.5 S.M.
TOTAL AREA: 739 S.F. 68.7 S.M.

KEY PLAN



UNIT A-2.1

1 BR/1 BATH

A/C AREA: 770 S.F. 71.5 S.M.

BALCONY: 40 S.F. 3.7 S.M.

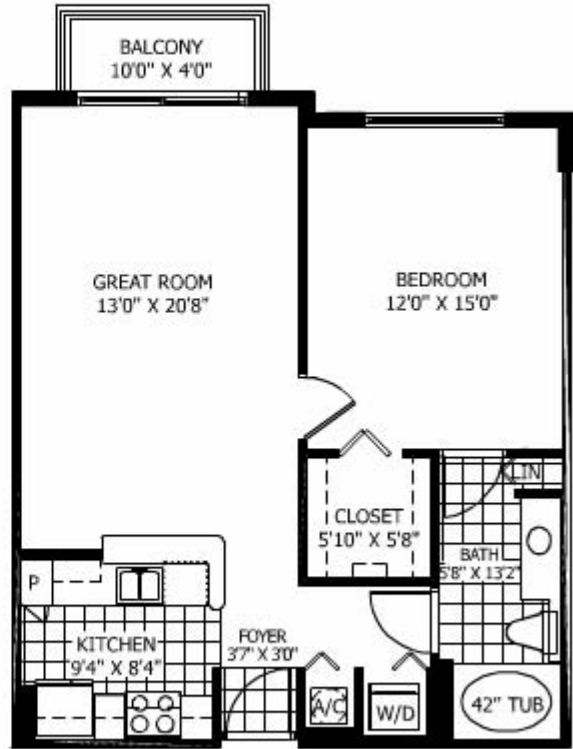
TOTAL AREA: 810 S.F. 75.2 S.M.



KEY PLAN

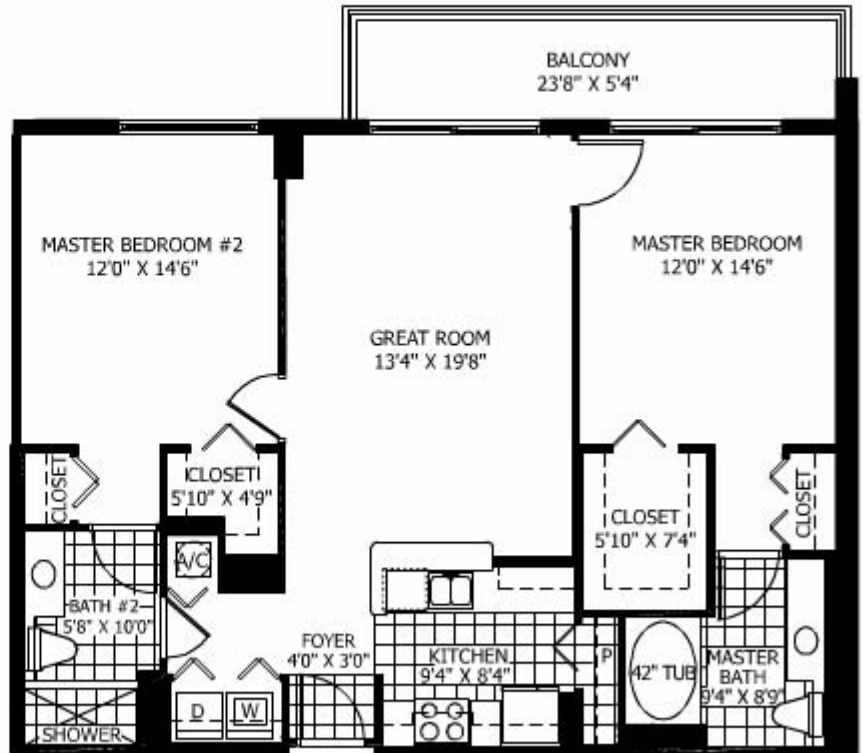


INTRACASTAL WATERWAY



UNIT B-1
 2 BR/2 BATH
 A/C AREA: 1,130 S.F. 105.0 S.M.
 BALCONY: 126 S.F. 11.7 S.M.
 TOTAL AREA: 1,256 S.F. 116.7 S.M.

KEY PLAN



UNIT B-2
 2 BR/2 BATH
 A/C AREA: 1,129 S.F. 105 S.M.
 BALCONY: 129 S.F. 12 S.M.
 TOTAL AREA: 1,258 S.F. 117 S.M.

AN
 KEY PLAN

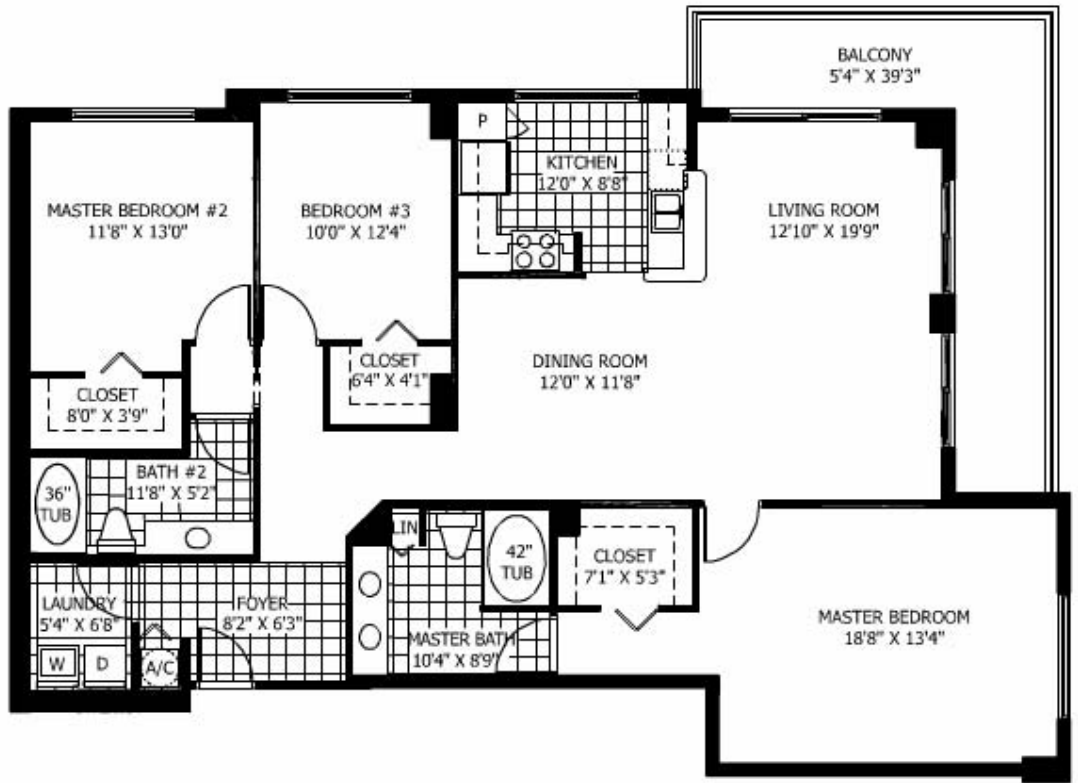


INTRACOASTAL WATERWAY



UNIT C-2
 3 BR/2 BATH
 A/C AREA: 1,646 S.F. 153.0 S.M.
 BALCONY: 209 S.F. 19.4 S.M.
 TOTAL AREA: 1,855 S.F. 172.4 S.M.

KEY PLAN



View – South East



View – North East

